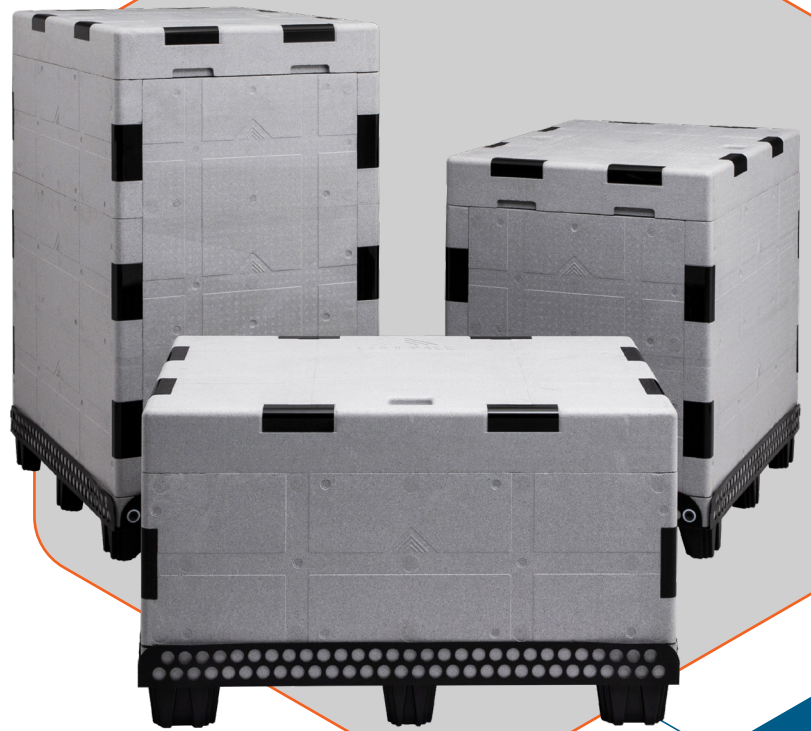




PELI
BIO THERMAL™



COOLPALL™ FLEX ADVANCE

SETTING NEW STANDARDS IN SINGLE-USE BULK SHIPPERS

CoolPall™ Flex is our range of high-performance bulk shippers, available in ISO and EURO footprints. CoolPall™ Flex is highly customisable, allowing users to tailor their shipper to specific shipping lanes or performance requirements, to achieve the optimal thermal protection at lowest overall cost. CoolPall™ Flex Advance comprises polystyrene and full VIP insulation surrounding the payload space (base, side panels and lid) together with PCM coolants in single or double configurations for premium performance, in 3 different sizes (narrow bodied aircraft, half height, full height).

WHY CHOOSE COOLPALL™ FLEX ADVANCE?

- A new approach in the design of bulk shippers
- Performance in excess of 140 hours
- Features PCM coolants and VIP insulation for the high performance available
- Double pod versions available for increased duration
- Narrow Bodied Aircraft, Half Height and Full Height options
- Payload volumes from 150L to 757L
- ISO & EURO footprints available
- Optimised for ULD use for air cargo applications
- Qualified to ISTA7D Profiles



COOLPALL™ FLEX ADVANCE



DURATION
140 + HOURS



TEMPERATURE

SERIES 4
+2°C to +8°C

SERIES 18-24
+15°C to +25°C

SERIES 20M
-20°C



VOLUME
150L – 757L

PELIBIOTHERMAL.COM



WATCH OUR VIDEO ABOUT THIS PRODUCT [CLICK HERE](#)

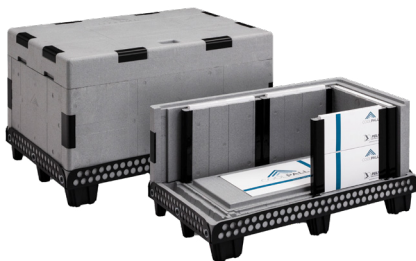
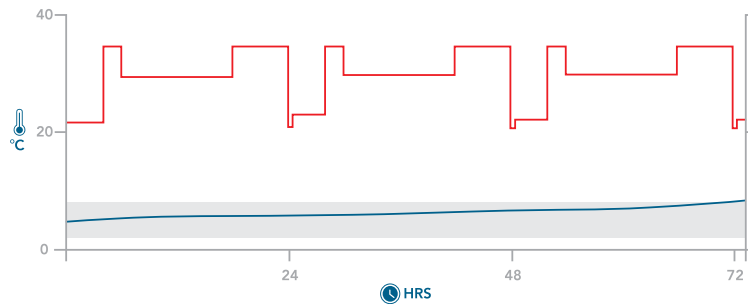
COOLPALL FLEX™ ADVANCE PRODUCT SPECIFICATION

Product	Litres	Exterior Dimensions WxDxH		Interior Dimensions WxDxH		Tare Weight		
		mm	inches	mm	inches	kg	lbs	
EURO PALLET	Single Pod NBA	175	1210 x 802 x 717	47.6 x 31.5 x 28.2	928 x 530 x 356	36.5 x 20.8 x 14.1	60.7	133.5
	Double Pod NBA	150	1210 x 802 x 717	47.6 x 31.5 x 28.2	928 x 455 x 356	36.5 x 17.9 x 14.1	77.1	169.6
	Single Pod HH	359	1210 x 802 x 1110	47.6 x 31.5 x 43.7	928 x 530 x 729	36.5 x 20.8 x 28.7	93.3	205.2
	Double Pod HH	308	1210 x 802 x 1110	47.6 x 31.4 x 43.7	928 x 455 x 729	36.5 x 17.9 x 28.7	113.7	250.1
	Single Pod FH	549	1210 x 802 x 1501	47.6 x 31.5 x 59	928 x 530 x 1117	36.5 x 20.8 x 43.9	120.6	265.3
	Double Pod FH	472	1210 x 802 x 1501	47.6 x 31.5 x 59	928 x 455 x 1117	36.5 x 17.9 x 43.9	150.7	331.5
ISO PALLET	Single Pod NBA	241	1210 x 1002 x 717	47.6 x 39.4 x 28.2	928 x 730 x 356	36.5 x 20.8 x 14.1	76.2	167.6
	Double Pod NBA	216	1210 x 1002 x 717	47.6 x 39.4 x 28.2	928 x 655 x 356	36.5 x 17.9 x 14.1	99.6	219.1
	Single Pod HH	494	1210 x 1002 x 1110	47.6 x 39.4 x 43.7	928 x 730 x 729	36.5 x 20.8 x 28.7	96.6	212.5
	Double Pod HH	443	1210 x 1002 x 1110	47.6 x 39.4 x 43.7	928 x 655 x 729	36.5 x 17.9 x 28.7	130.1	286.2
	Single Pod FH	757	1210 x 1002 x 1501	47.6 x 39.4 x 59	928 x 730 x 1117	36.5 x 20.8 x 43.9	136.5	300.3
	Double Pod FH	679	1210 x 1002 x 1501	47.6 x 39.4 x 59	928 x 655 x 1117	36.5 x 17.9 x 43.9	166.6	366.5

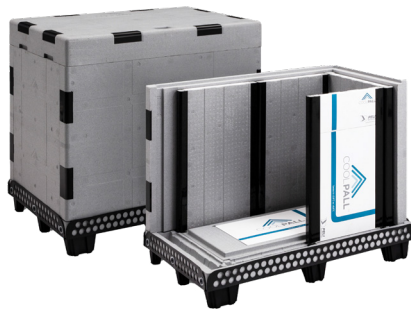
ADDITIONAL DATA

Series 4 CoolPall™ Flex Advance Half Height Single Pod

Single Layer ISO +2°C to +8°C ISTA7D HOT 68 hours



Narrow Bodied Aircraft



Half Height



Full Height



FOR MORE INFORMATION ABOUT PELI BIOTHERMAL PRODUCTS [CLICK HERE](#)

FOR MORE INFORMATION ABOUT PELI BIOTHERMAL PRODUCTS, PLEASE CONTACT:

EMEA OFFICE - INFOEMEA@PELIBIOTHERMAL.COM T: +44 (0)1525 243 770

AMERICAS OFFICE - INFOAMERICAS@PELIBIOTHERMAL.COM T: +1(763) 412-4800 TOLL FREE US: T: +(877) 537-9800

ASIA OFFICE - INFOASIA@PELIBIOTHERMAL.COM T: +65 6681 0095

PELIBIOTHERMAL.COM

ISO17025, ISO9001-2008 Accredited

Golden Hour™, TIC™, Crêdo™, Crêdo Cube™, Crêdo ProEnvision™, Crêdo Xtreme™, Crêdo Duracube™, Crêdo ProMed™, Sherpa Systems™, CoolGuard™ and CoolPall™ are registered trademarks of Pelican Products Inc., its subsidiaries and / or affiliates



©2022 Peli BioThermal Ltd all rights reserved